

秋田県経年水質マップ

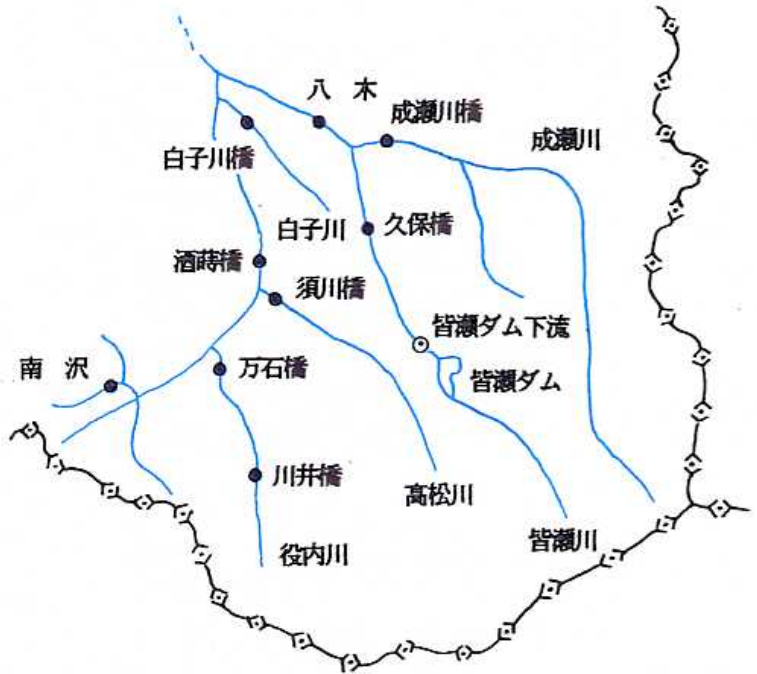
2. 雄物川水系

作 図：片野 登
(秋県立大学名誉教授)

データ：秋 田 県
(公共用水域水質測定結果他)

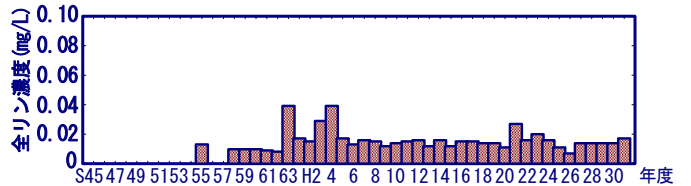
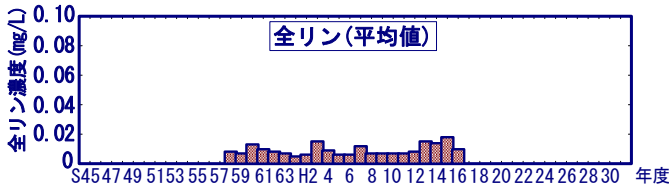
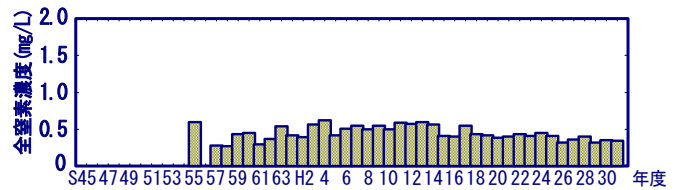
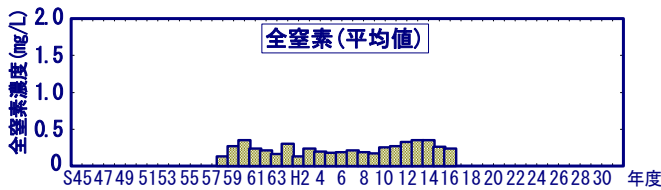
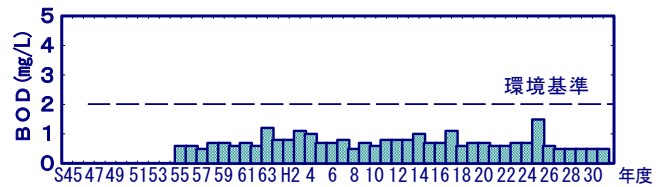
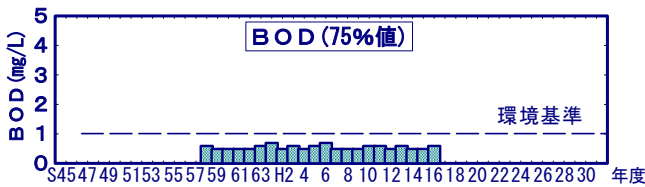
2. 雄物川水系

(1) 雄物川上・中流

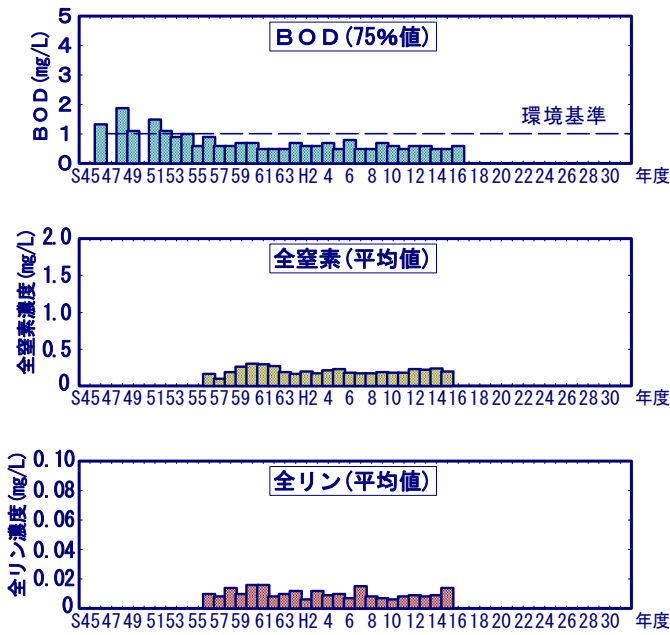


雄物川上流（南沢）

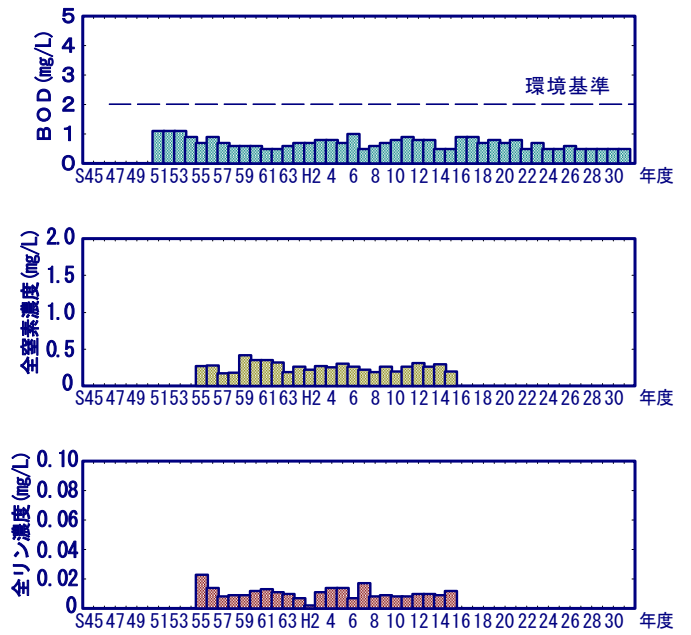
雄物川中流（酒蒔橋）



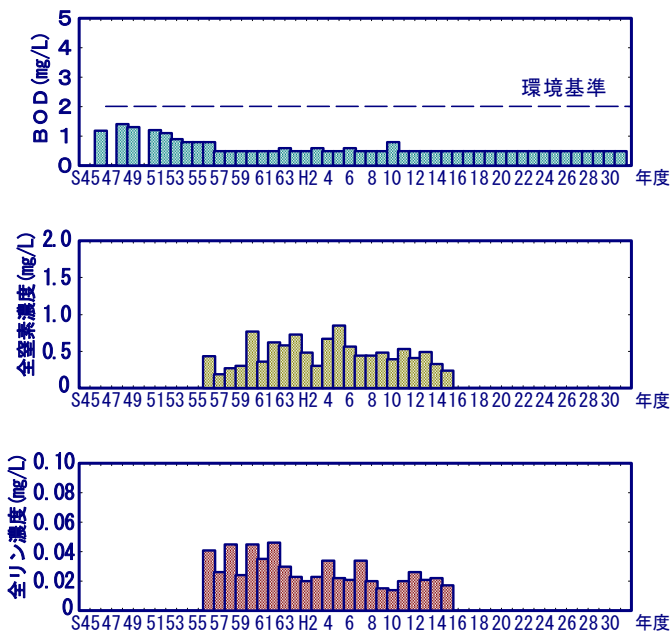
役内川上流 (川井橋)



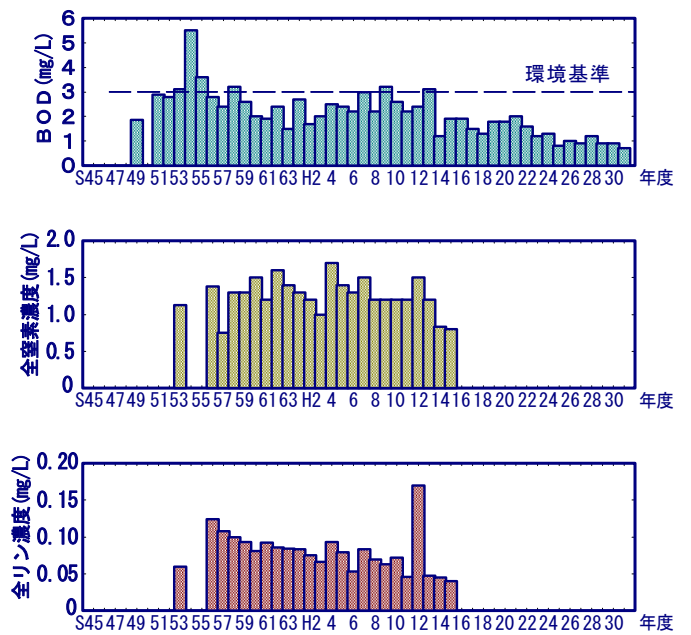
役内川下流 (万石橋)



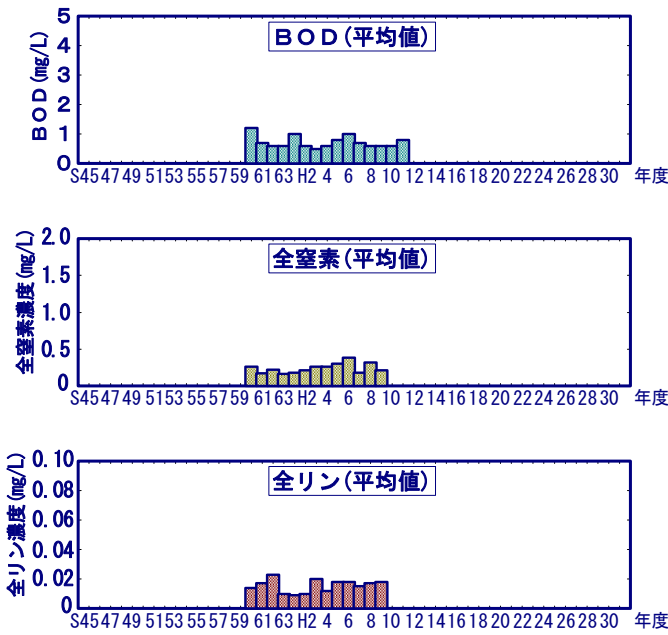
高松川 (須川橋)



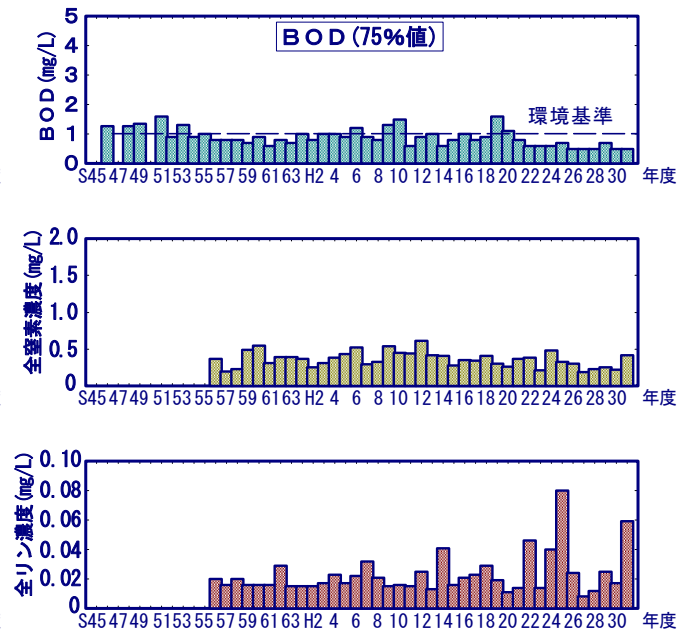
白子川 (白子川橋)



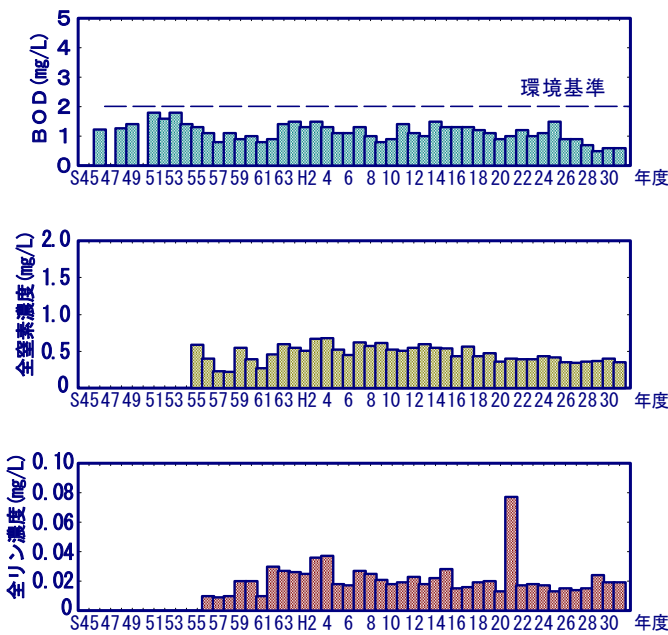
皆瀬川上流 (◎皆瀬ダム下流)



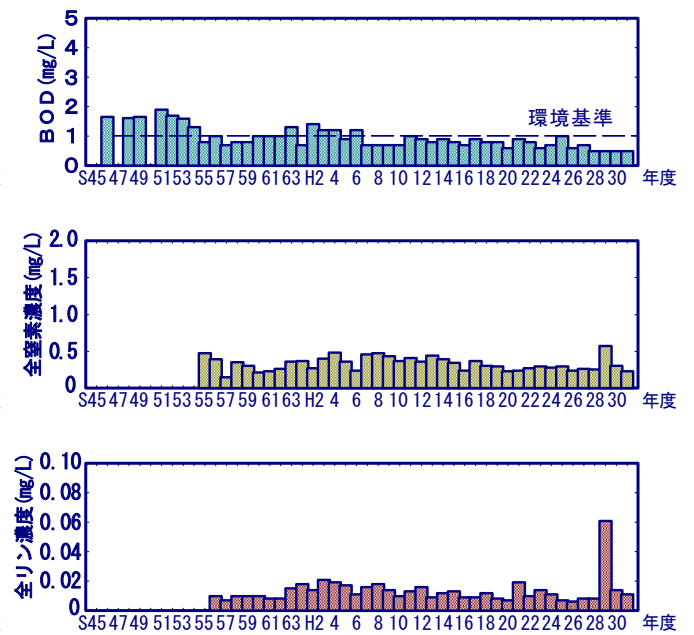
皆瀬川上流 (久保橋)



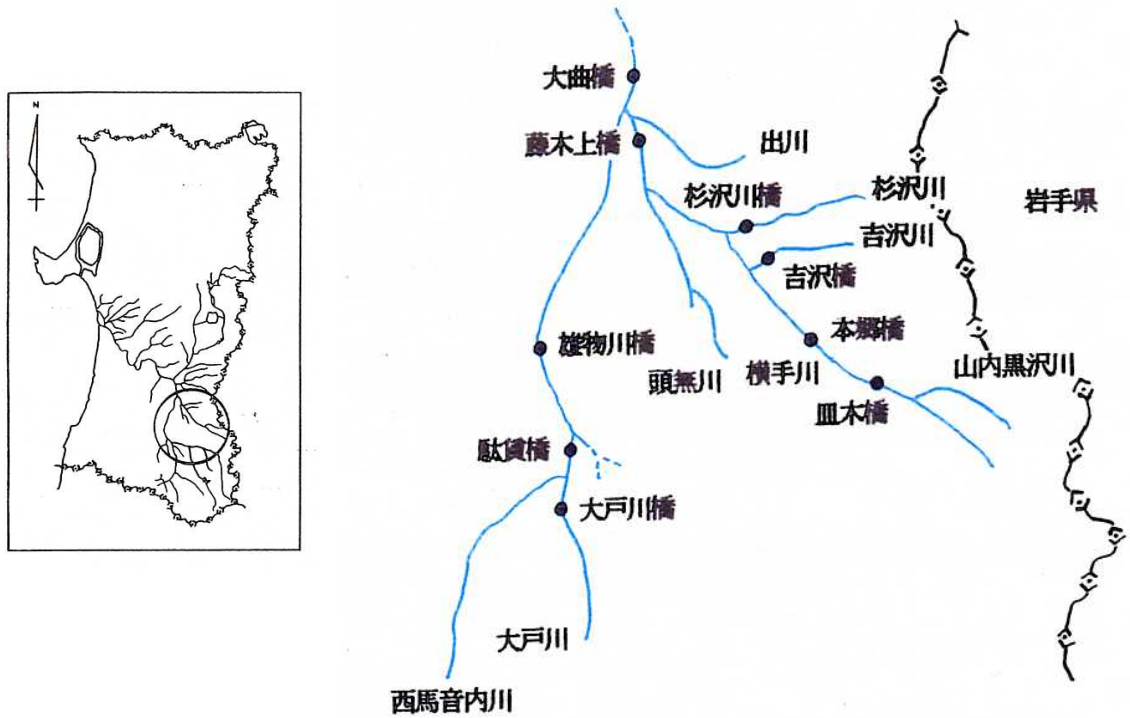
皆瀬川下流 (岩崎橋・八木)



成瀬川 (真人橋・成瀬川橋)

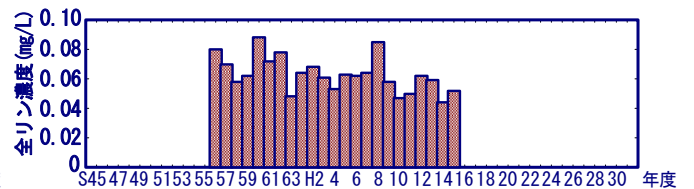
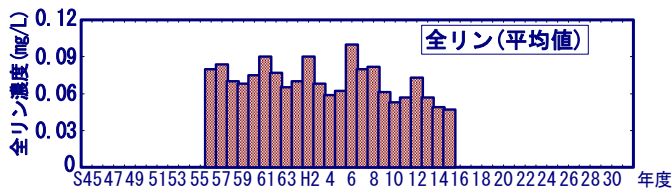
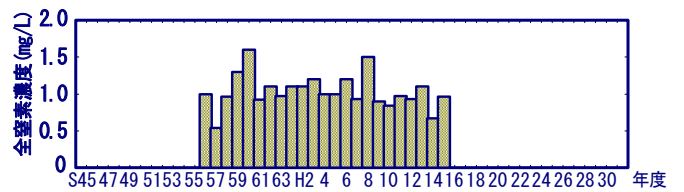
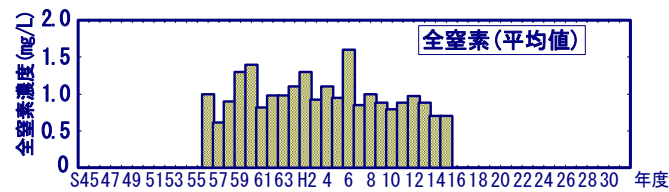
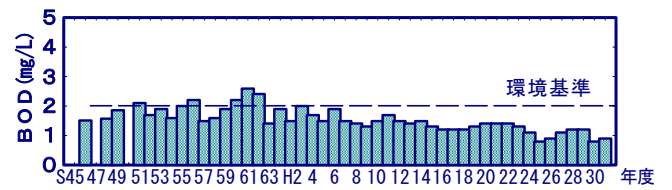
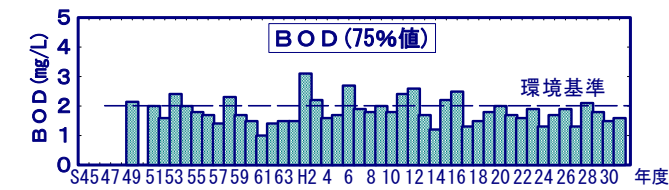


(2) 雄物川中流 (その1)

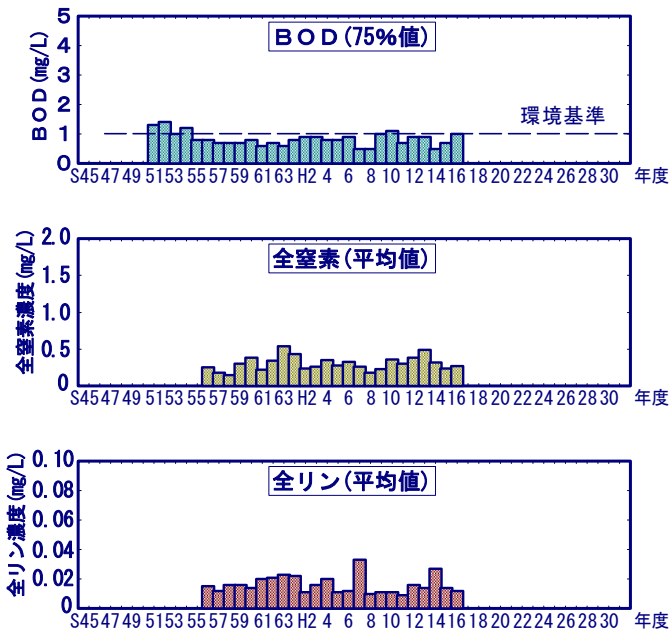


大戸川 (大戸川橋)

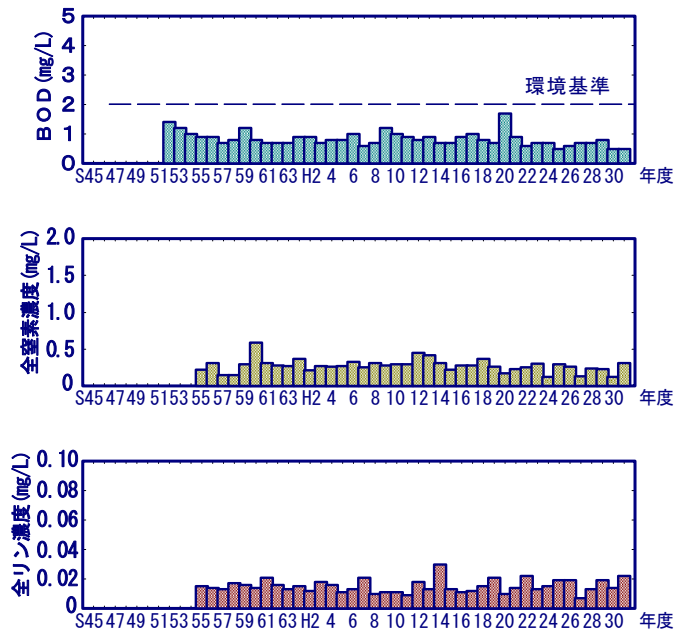
西馬音内川 (駄賃橋)



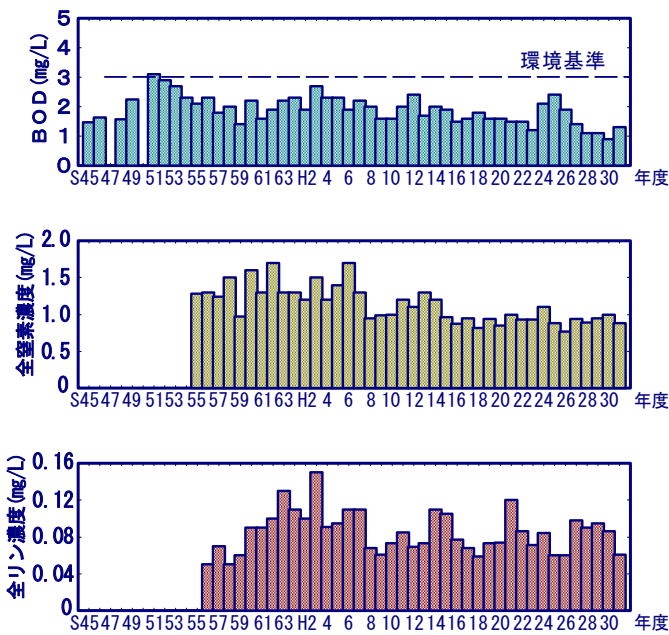
横手川上流（皿木橋）



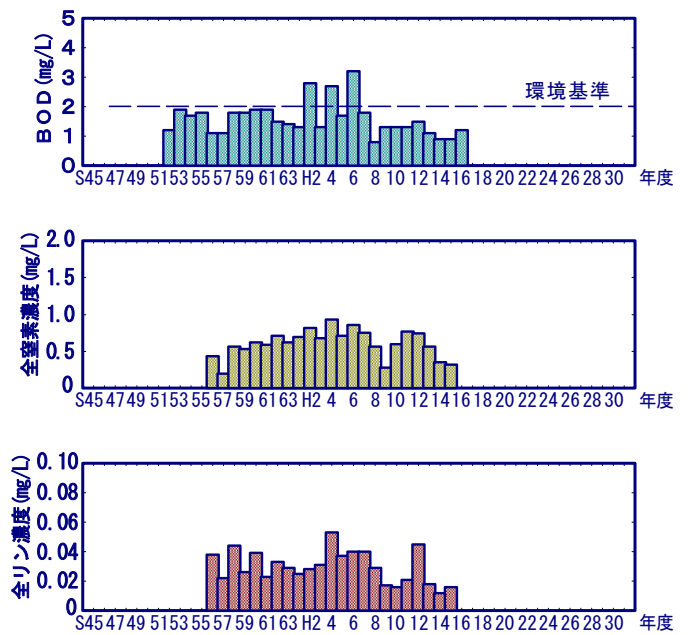
横手川中流（本郷橋）



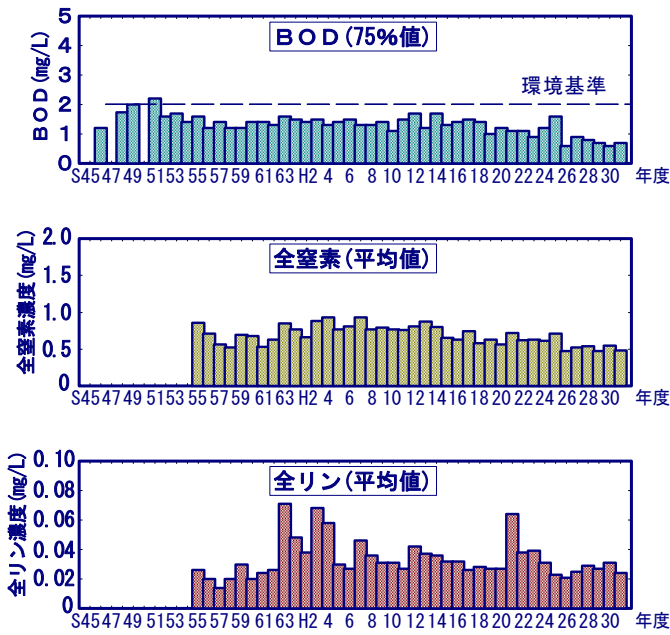
横手川下流（藤木上橋）



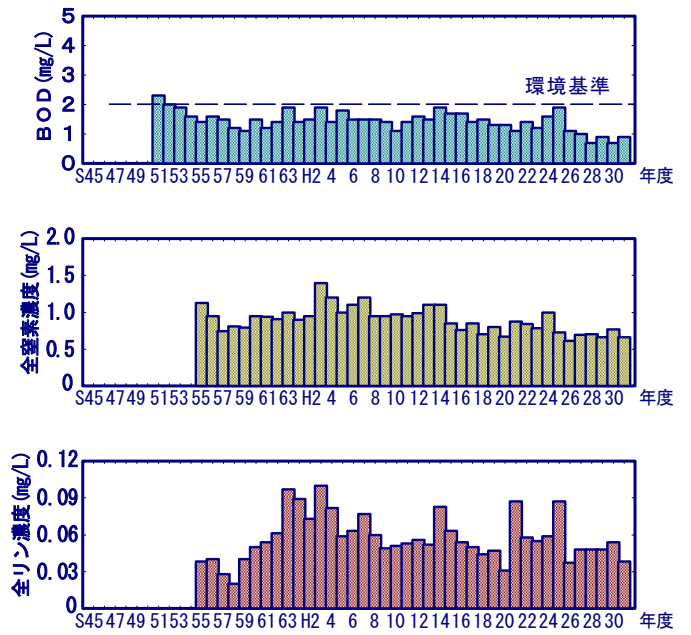
吉沢川（吉沢橋）



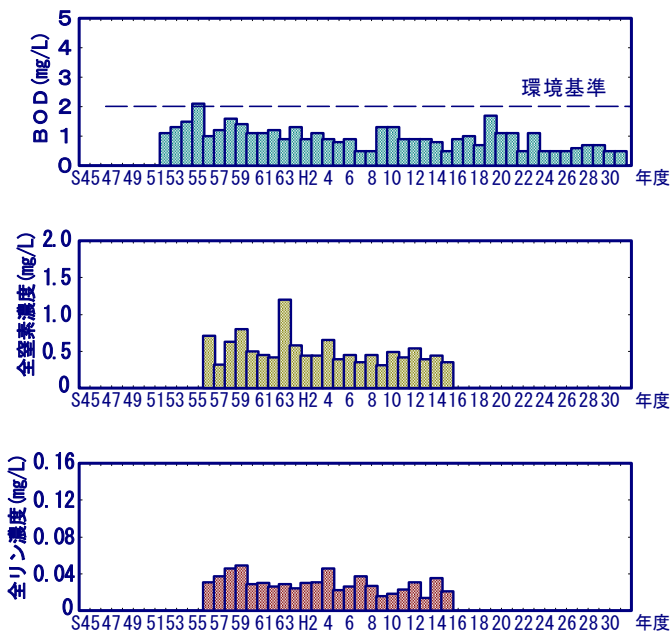
雄物川中流（雄物川橋）



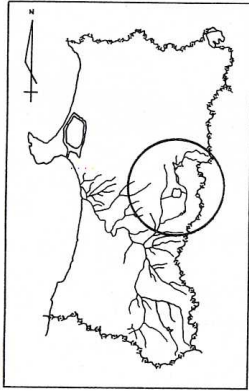
雄物川中流（大曲橋）



杉沢川（杉沢川橋）

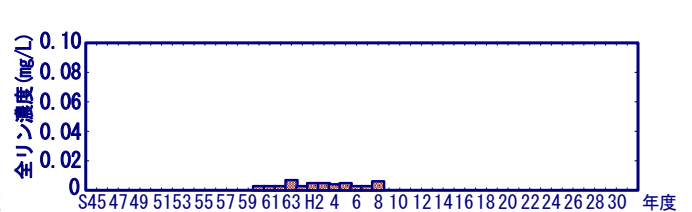
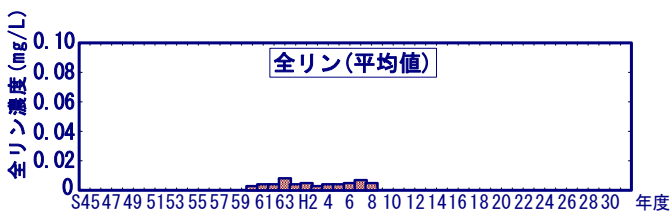
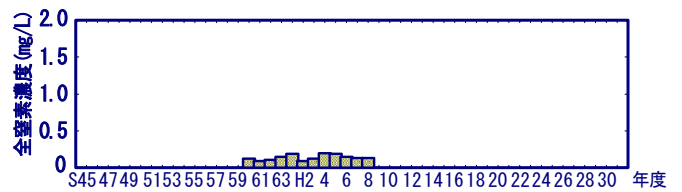
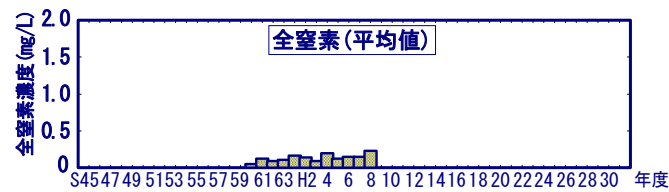
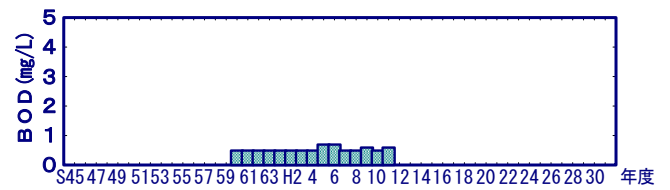
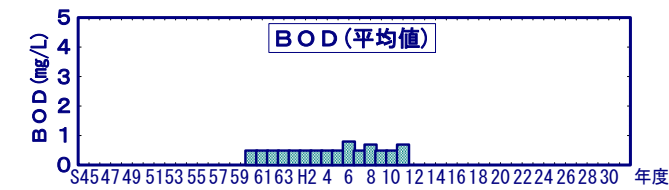


(3) 雄物川中流 (その2)

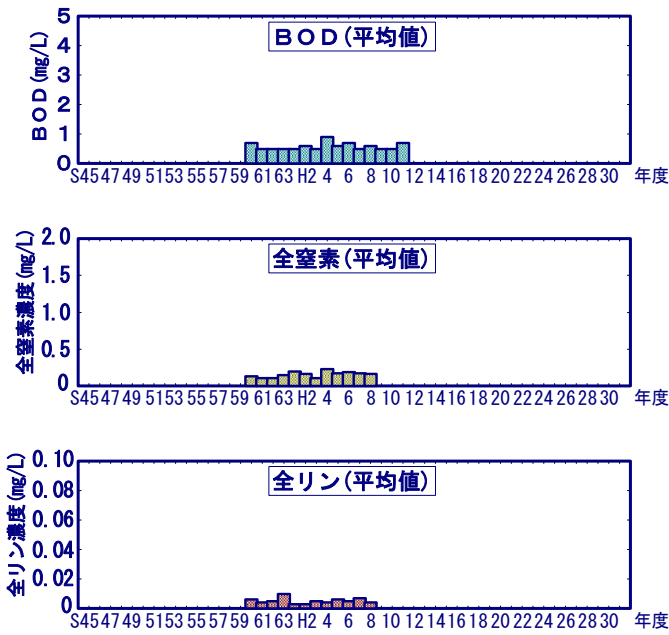


玉川上流 (◎鋳畑ダム下流)

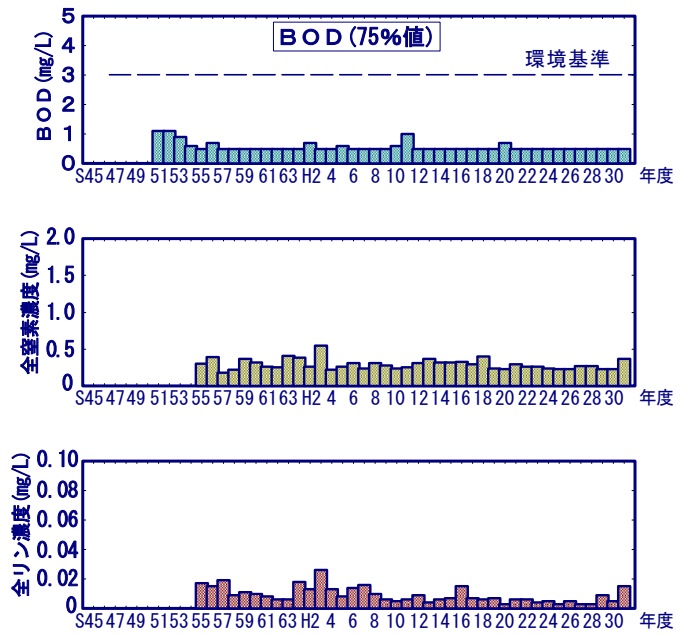
玉川上流 (◎夏瀬ダム下流)



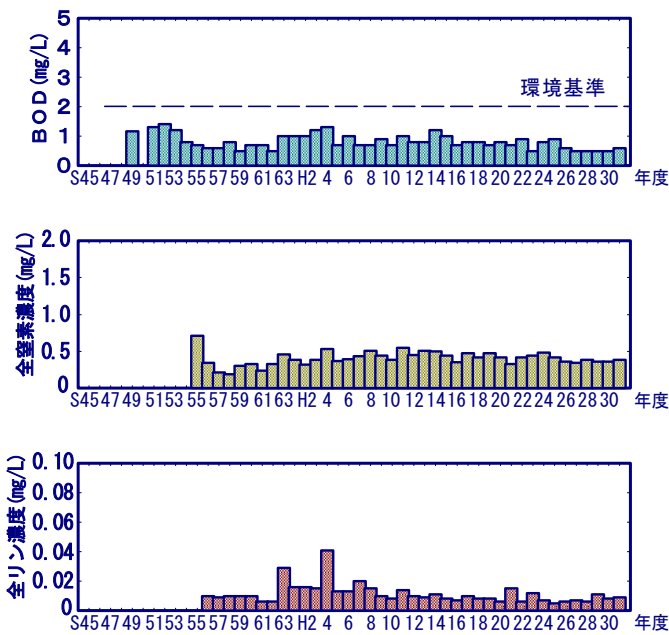
玉川上流 (◎神代ダム下流)



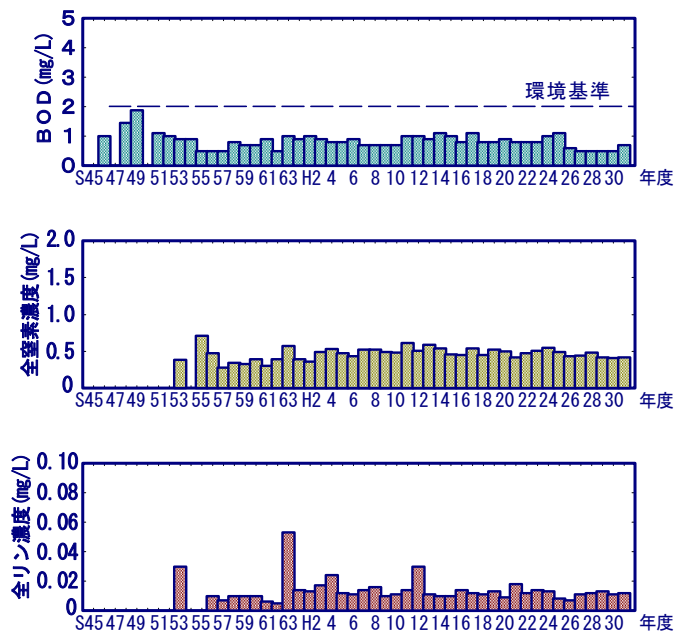
玉川上流 (岩瀬橋)



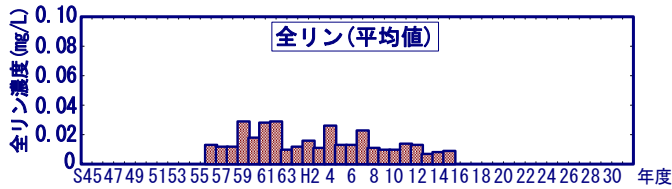
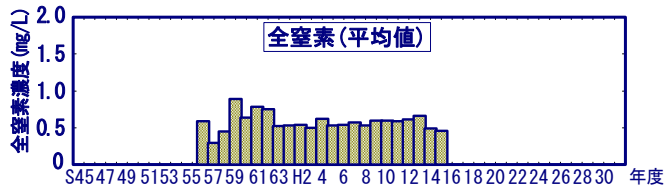
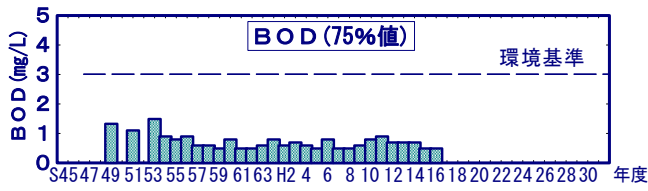
玉川下流 (長野大橋)



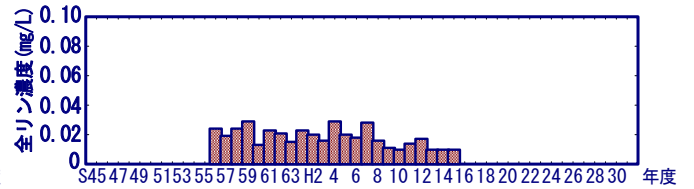
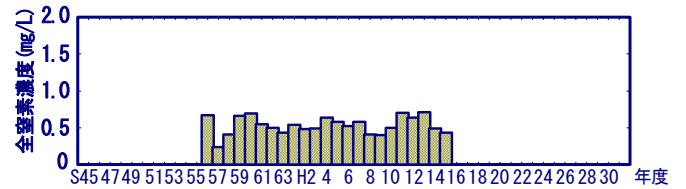
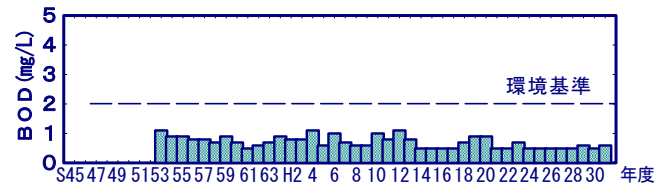
玉川下流 (玉川橋)



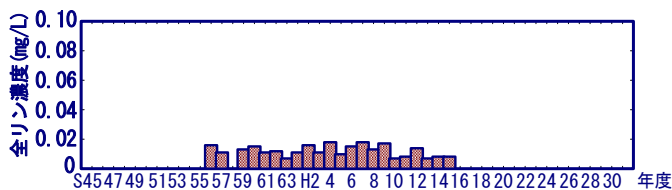
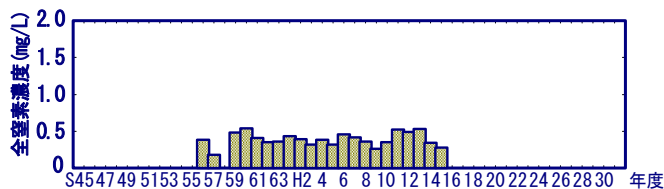
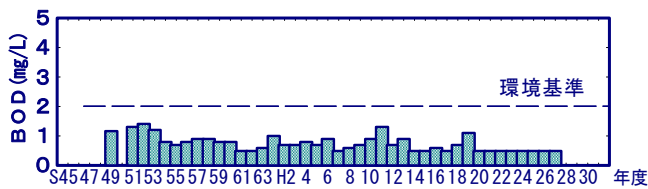
入見内川下流（月見堂橋）



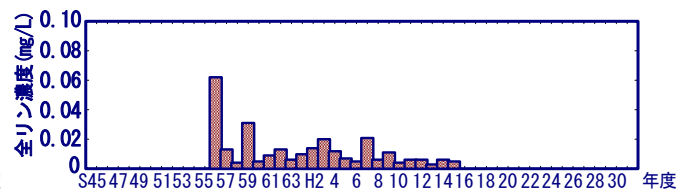
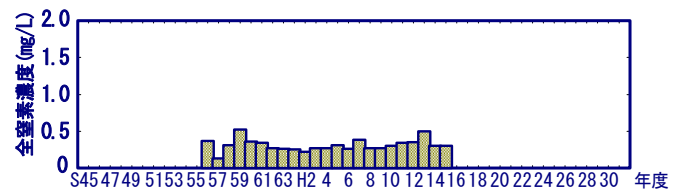
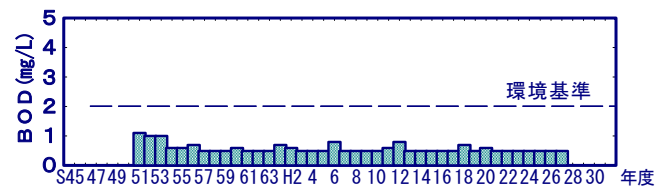
入見内川下流（切欠田橋）



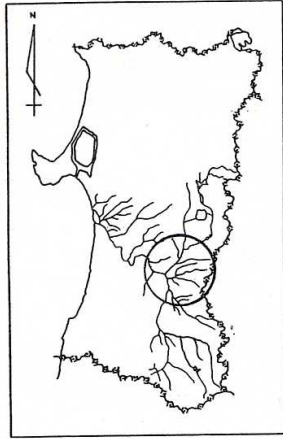
楡木内川下流（内川橋）



齋内川下流（瀬川橋）

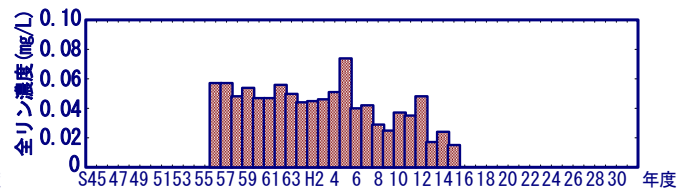
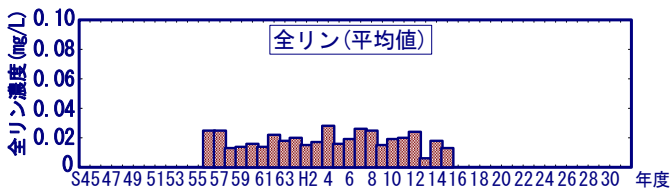
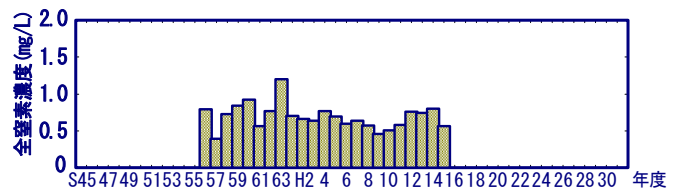
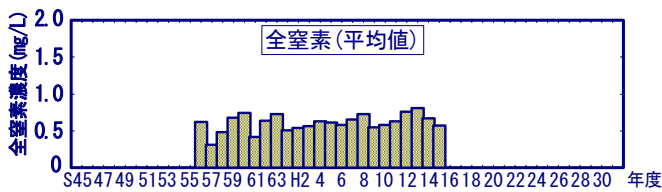
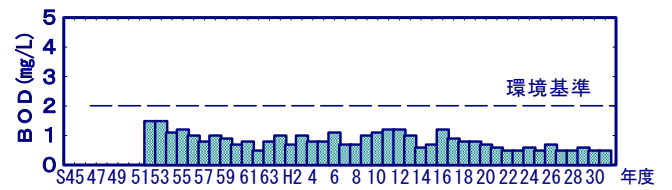
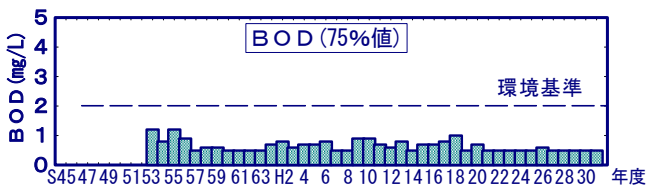


(4) 雄物川中流 (その3)

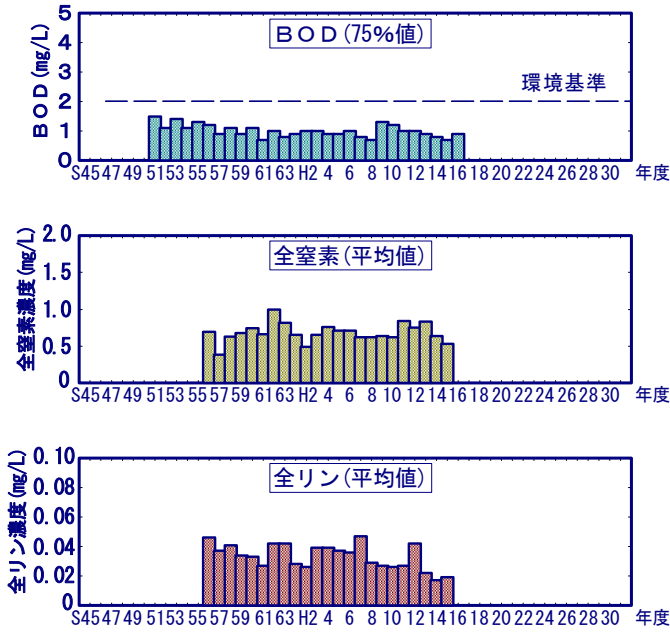


川口川下流 (相野橋・竜門寺橋)

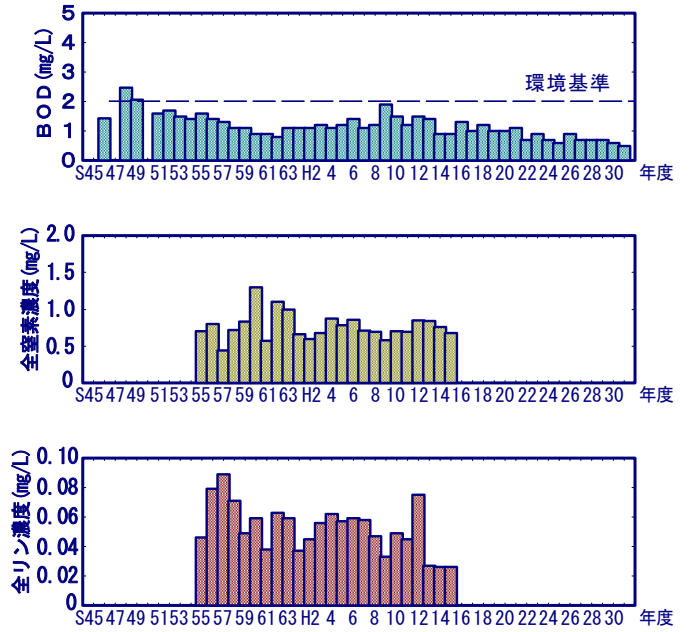
窟堰川下流 (大和田橋)



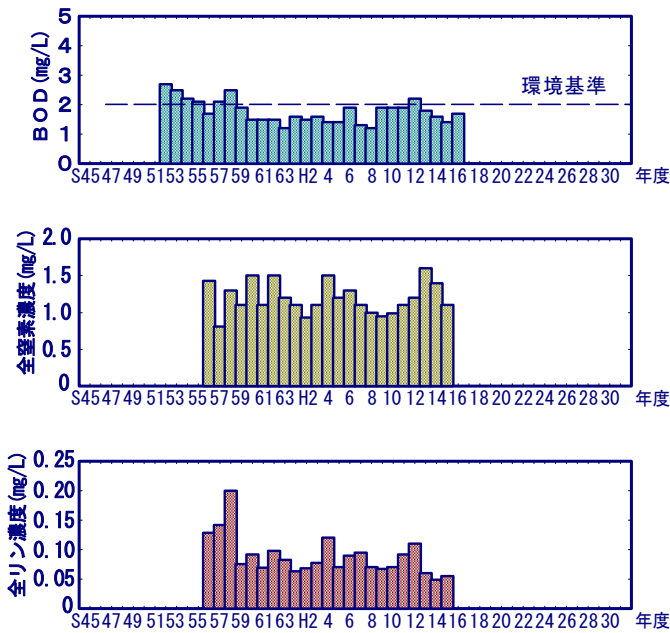
丸子川上流（田茂木橋）



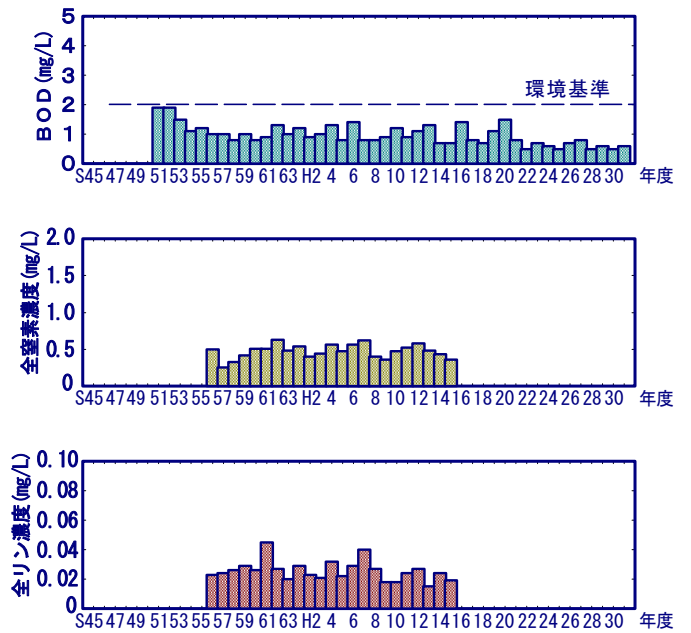
丸子川下流（丸子橋）



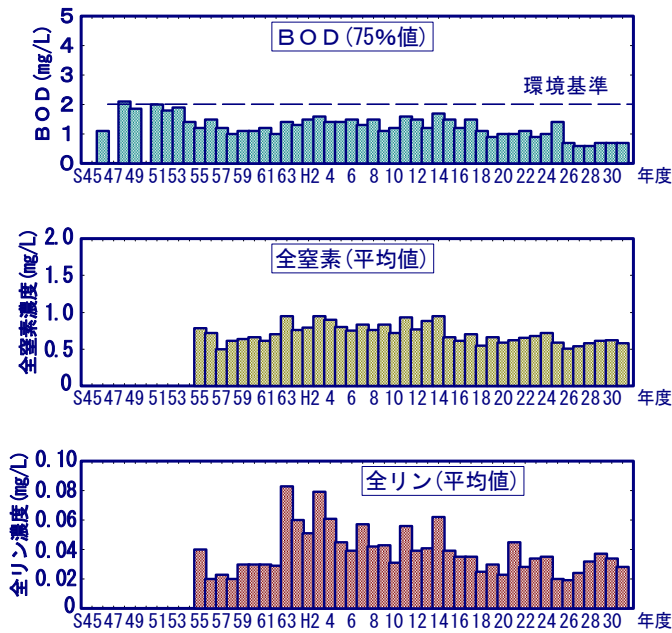
福部内川下流（福部内川橋）



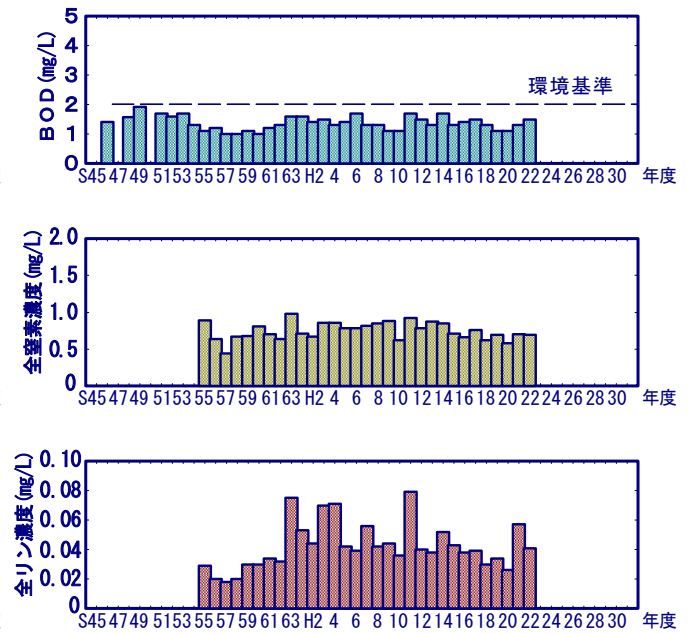
樽岡川（赤平橋）



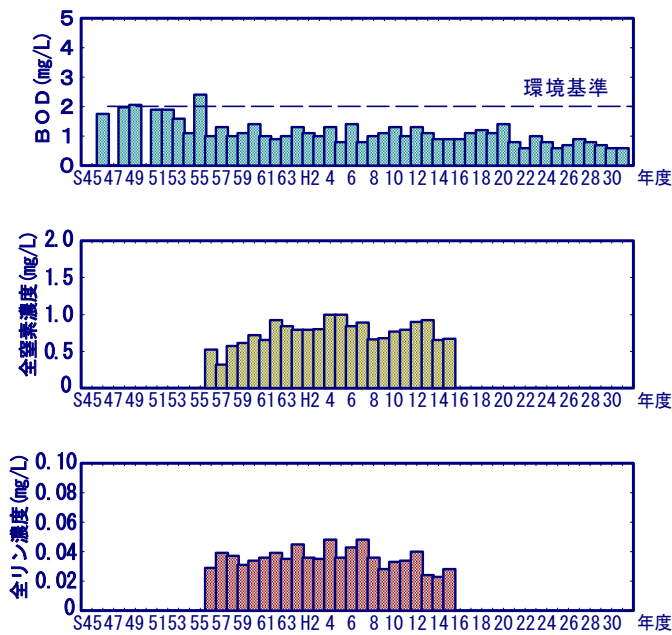
雄物川中流（岳見橋）



雄物川中流（刈和野橋）



土買川（暁橋）

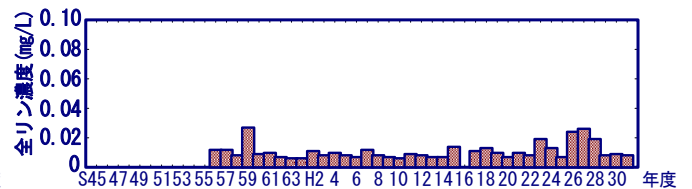
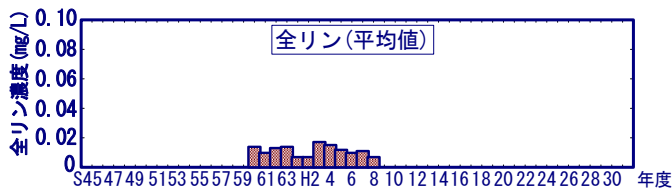
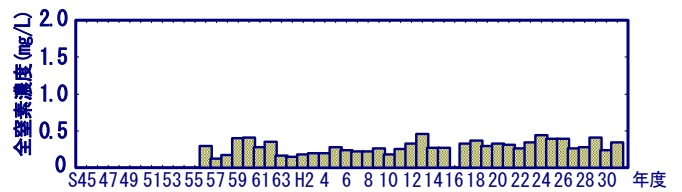
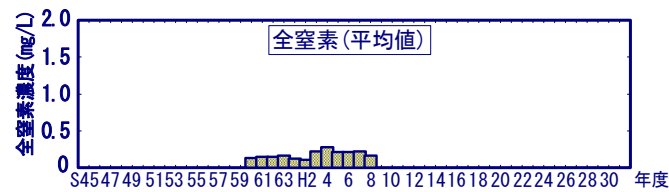
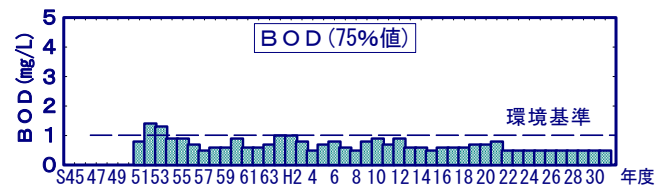
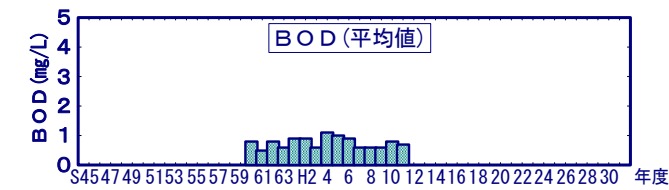


(5) 雄物川中流 (その4)

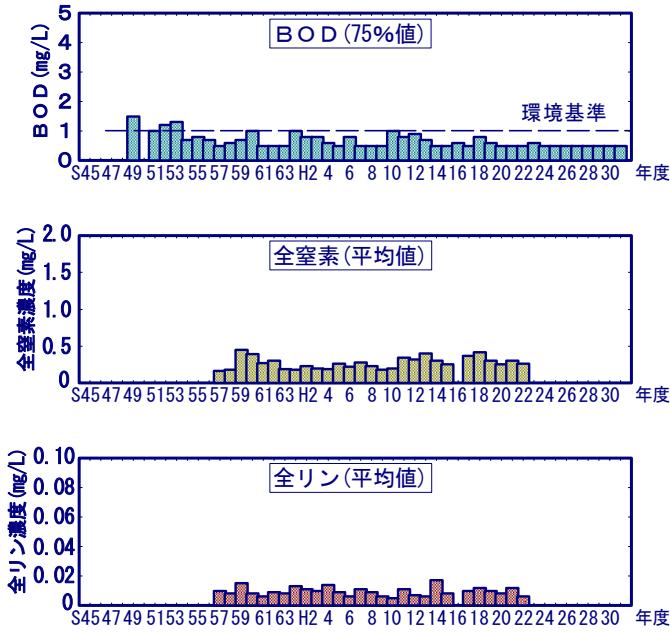


三内川 (◎岩見ダム下流)

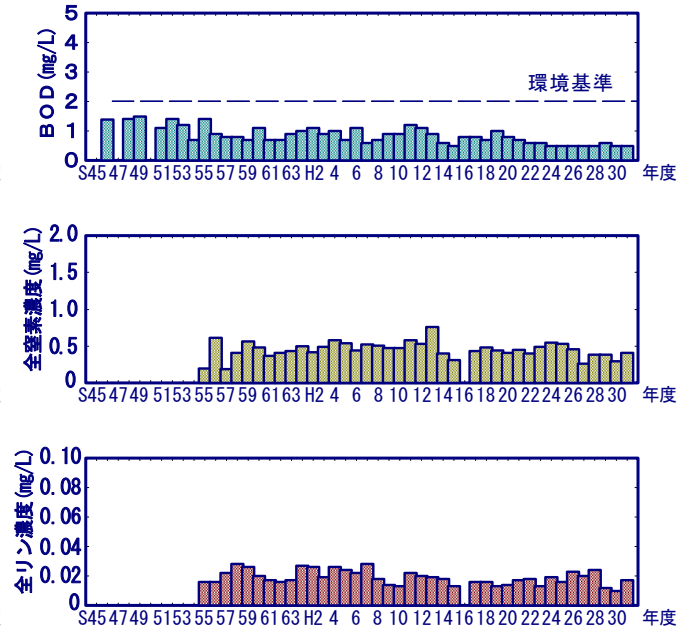
三内川 (飛沢橋)



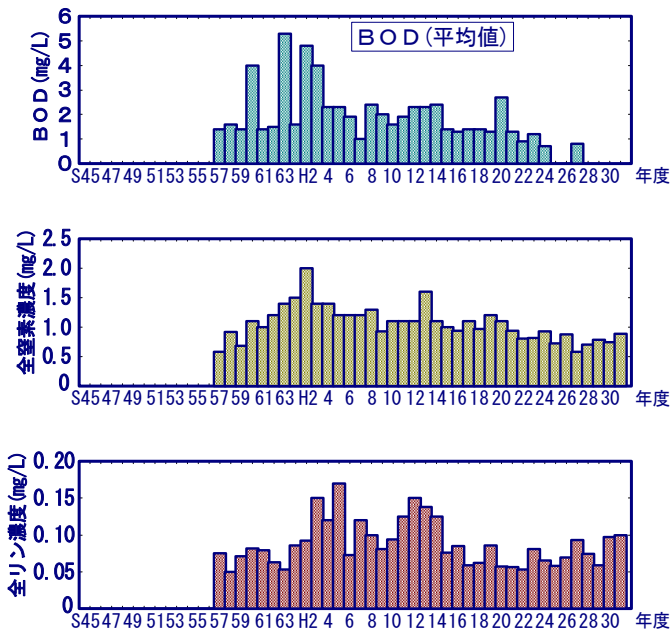
岩見川上流（岩見大橋）



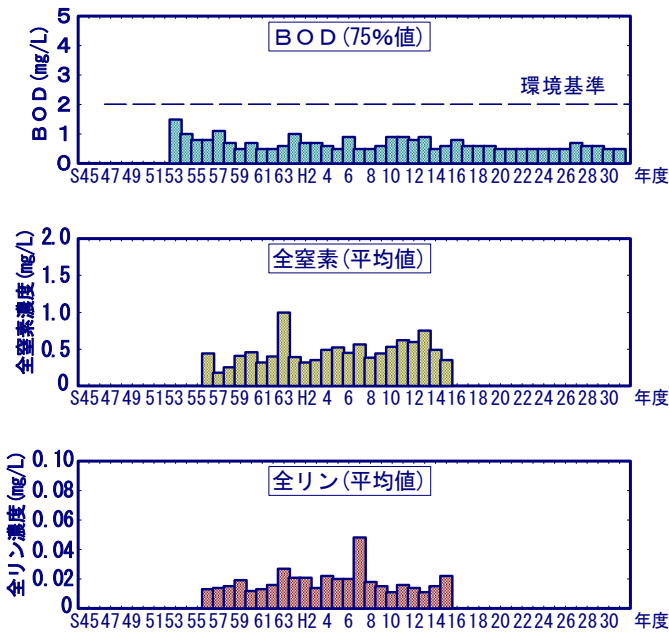
岩見川下流（本田橋）



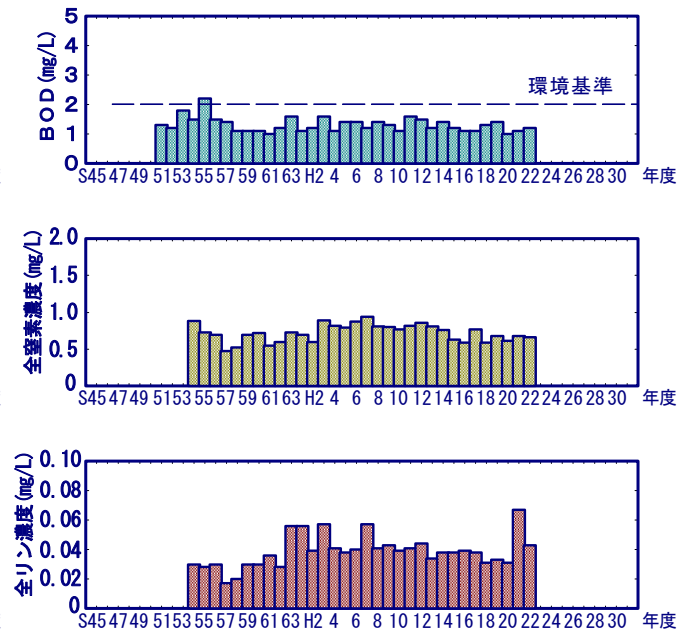
古川（◎中山）



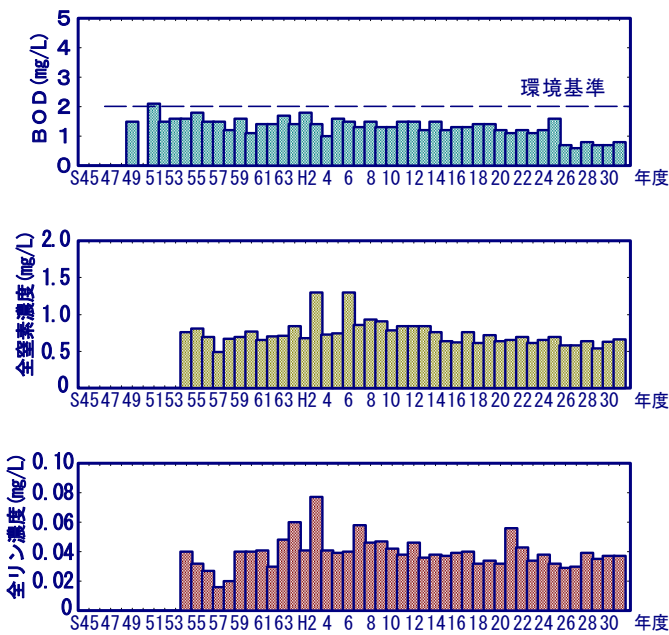
淀川（馬場橋）



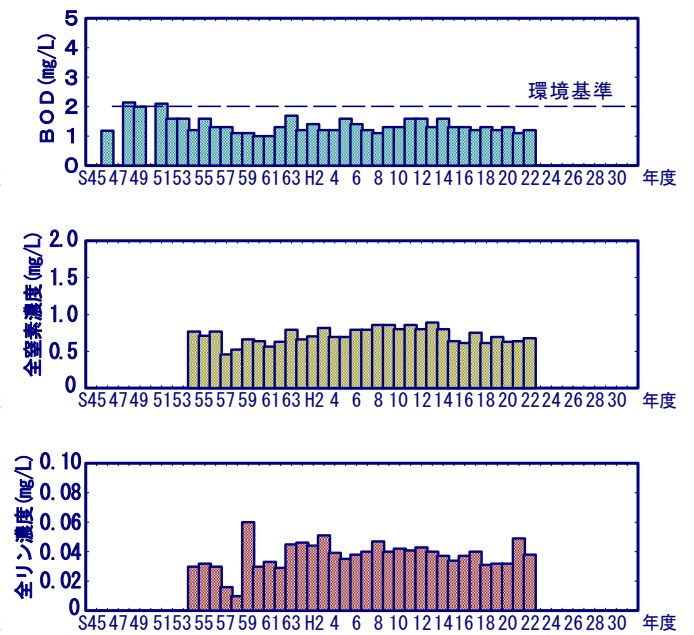
雄物川中流（新波橋）



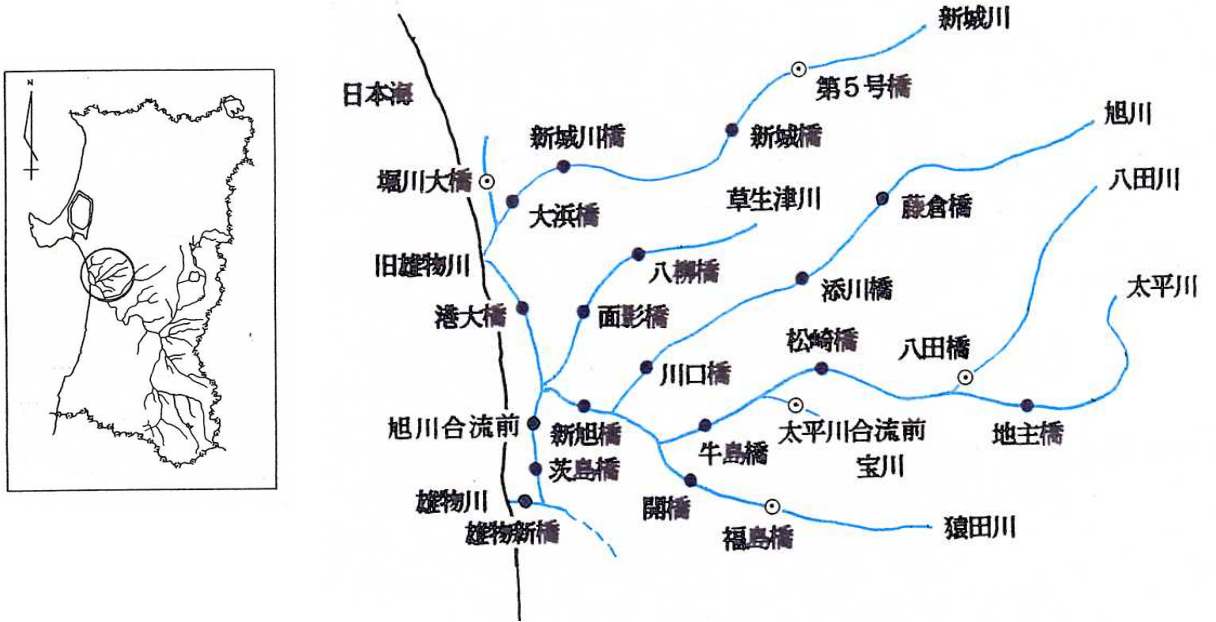
雄物川中流（黒瀬橋）



雄物川中流（秋田大橋）

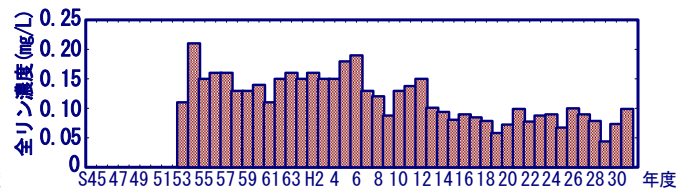
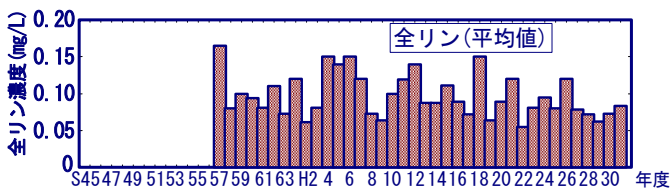
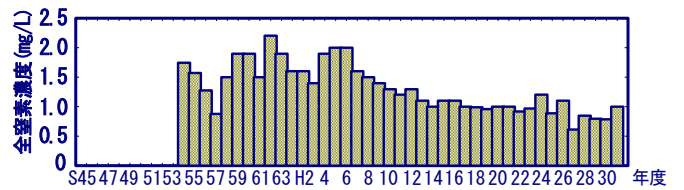
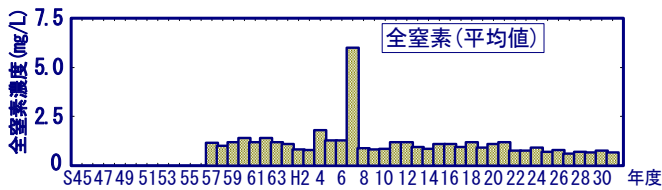
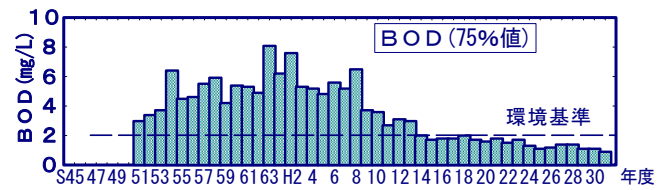
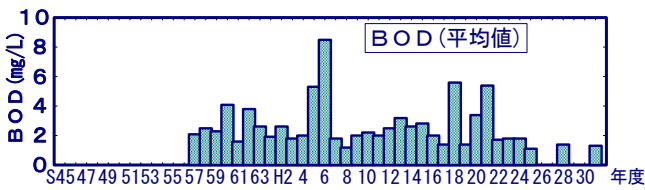


(6) 雄物川下流

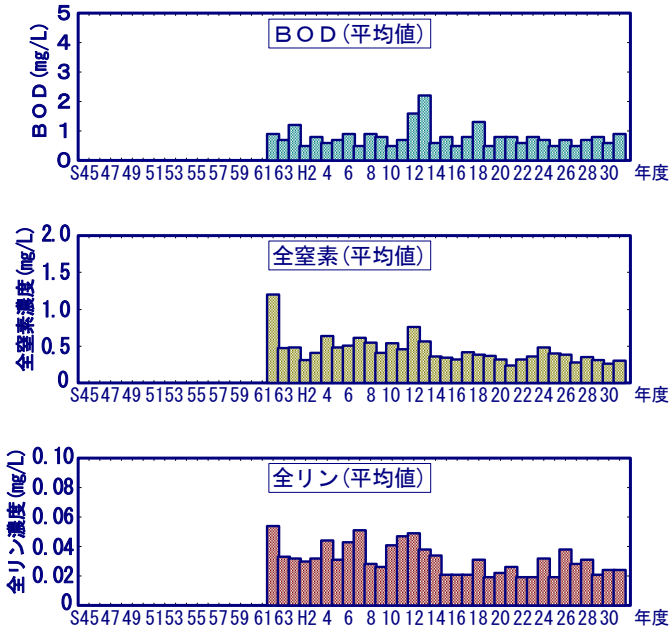


猿田川 (◎福島橋)

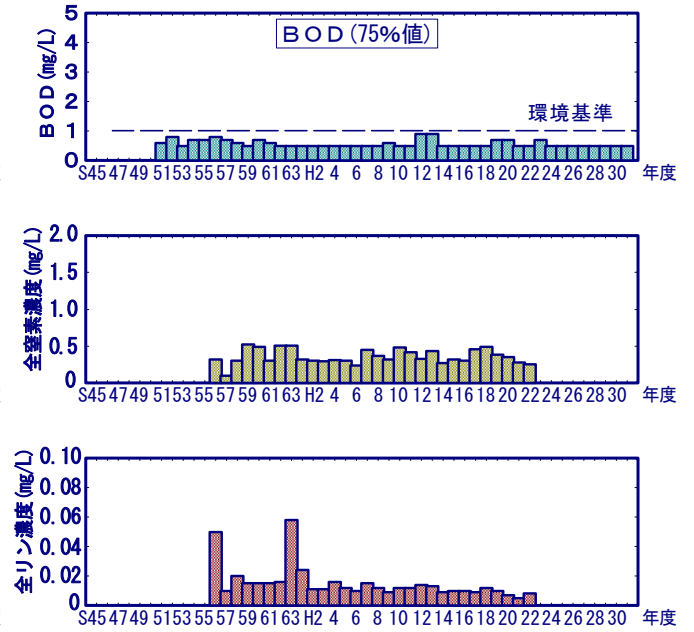
猿田川 (開橋)



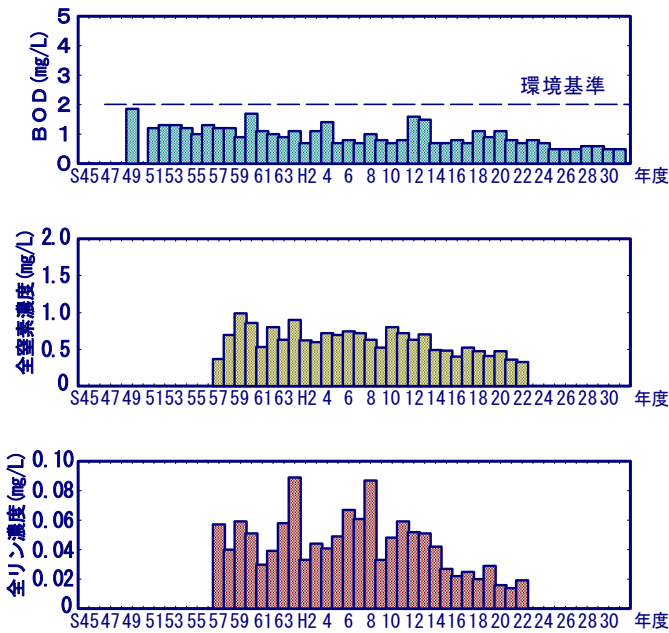
八田川 (◎八田橋)



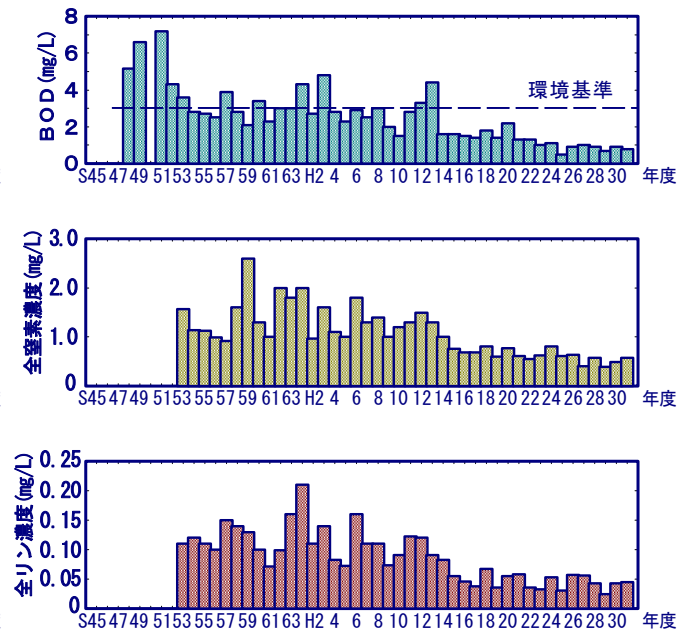
太平川上流 (地主橋)



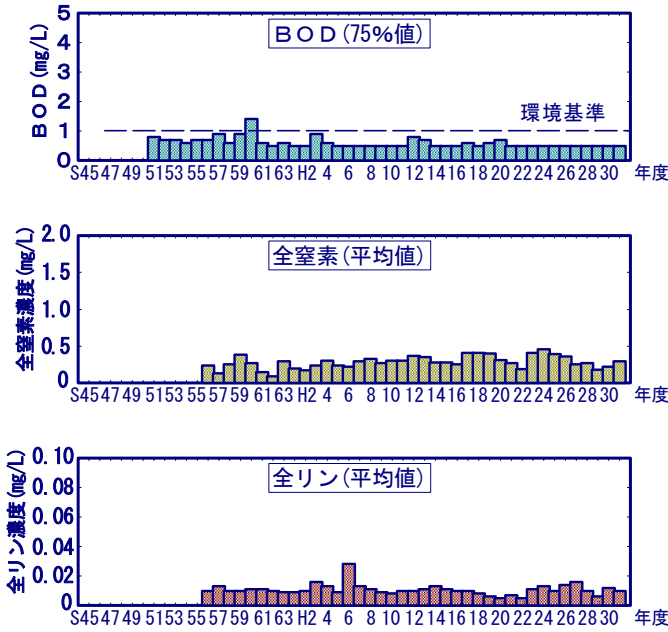
太平川中流 (松崎橋)



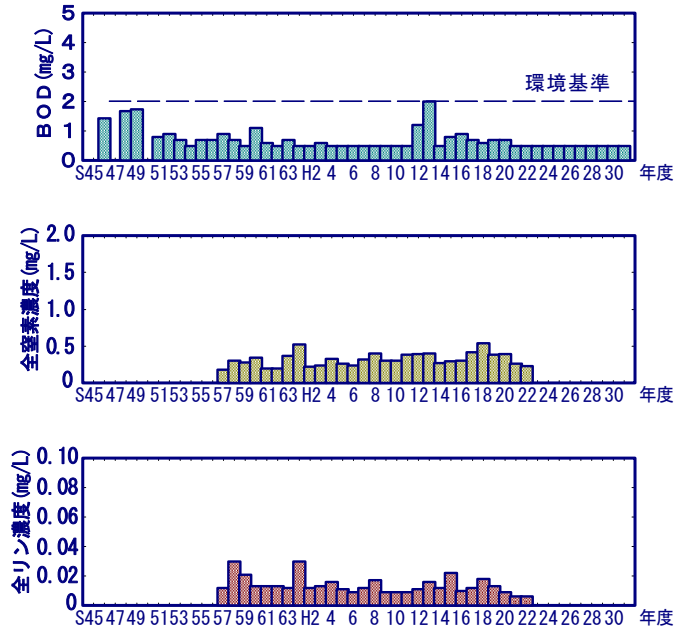
太平川下流 (牛島橋)



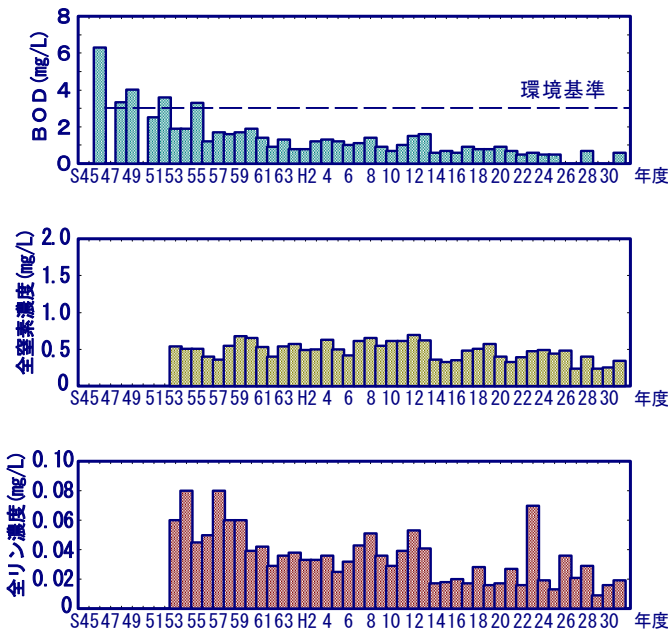
旭川上流（藤倉橋）



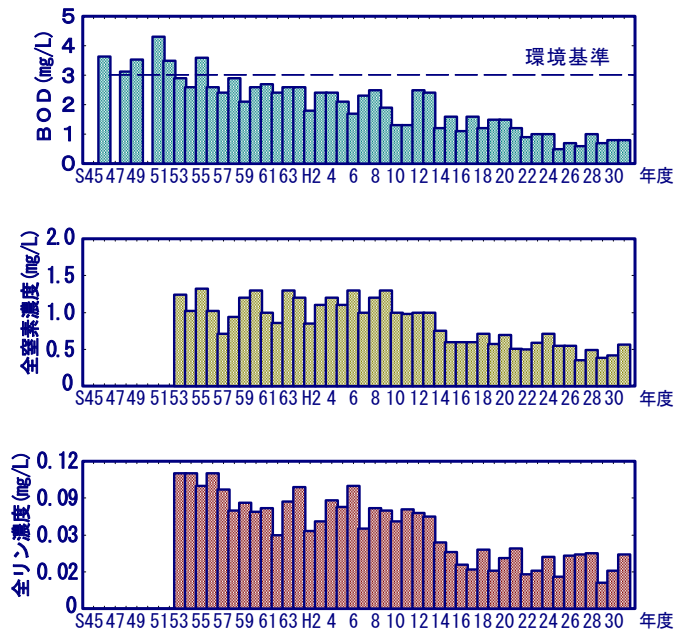
旭川中流（添川橋）



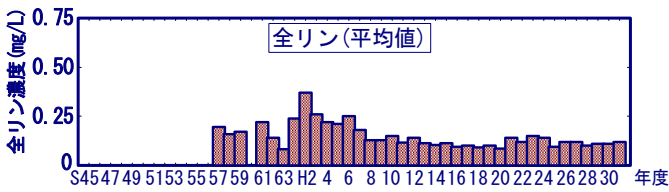
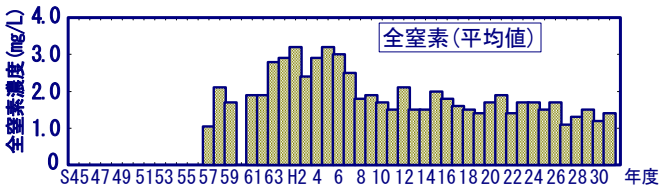
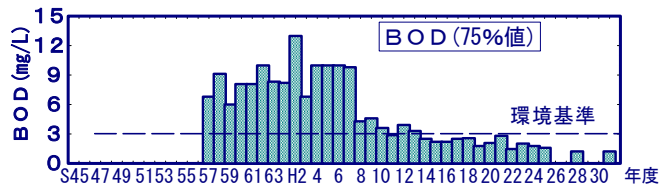
旭川下流（川口橋）



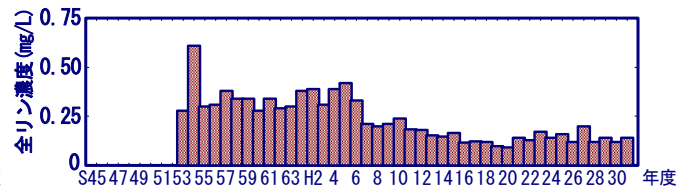
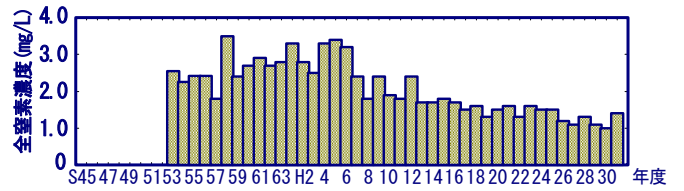
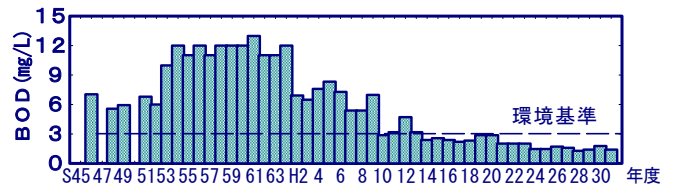
旭川下流（新旭橋）



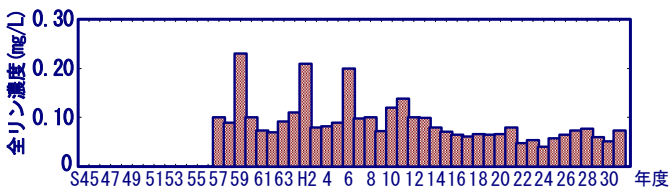
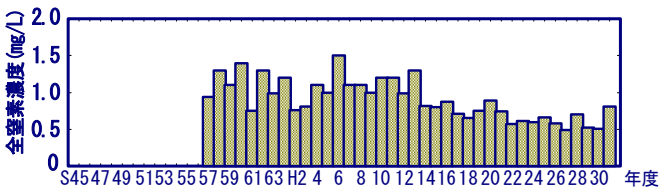
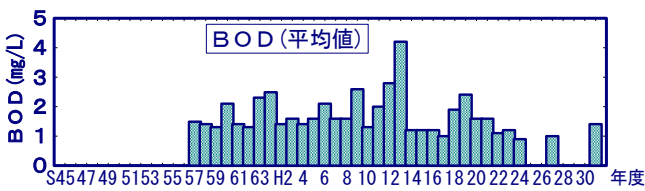
草生津川（八柳橋）



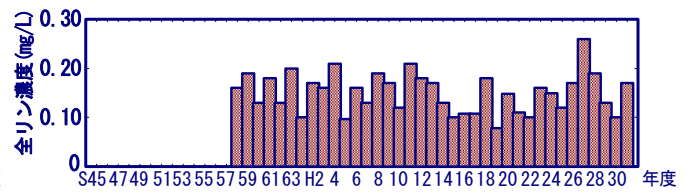
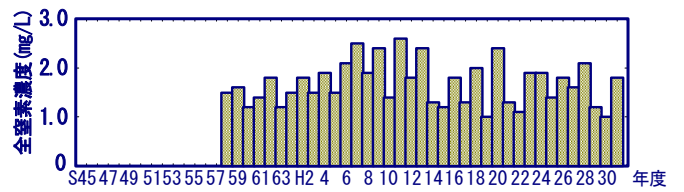
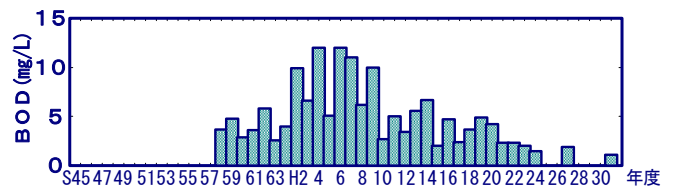
草生津川（面影橋）



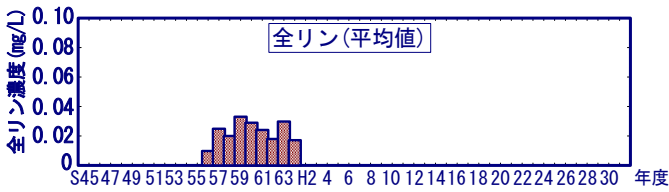
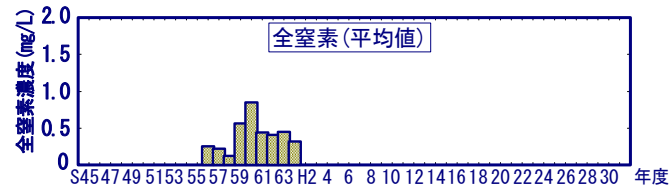
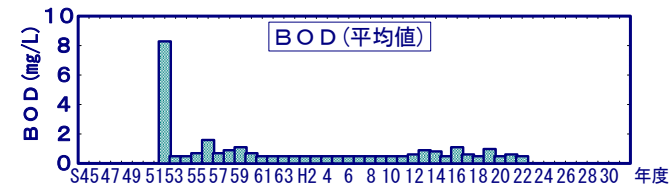
宝川（◎太平川合流前）



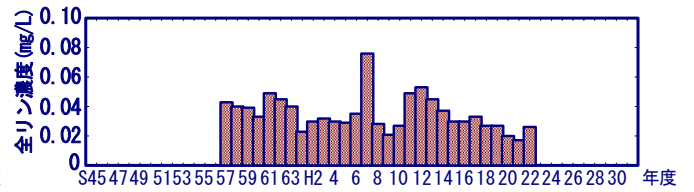
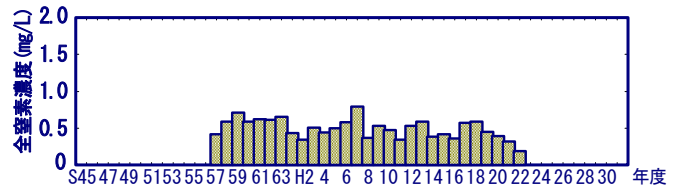
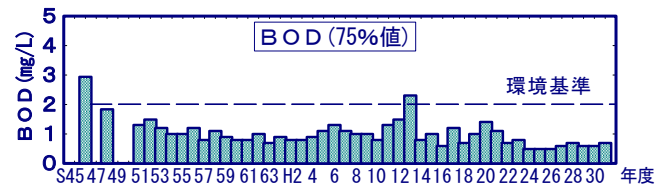
島合川（◎堀川大橋）



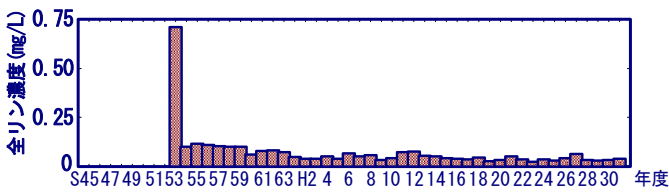
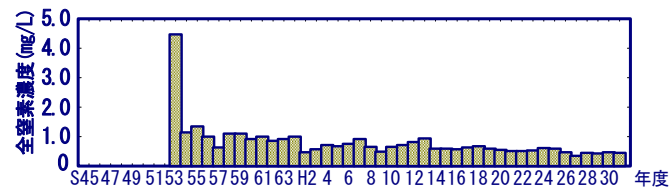
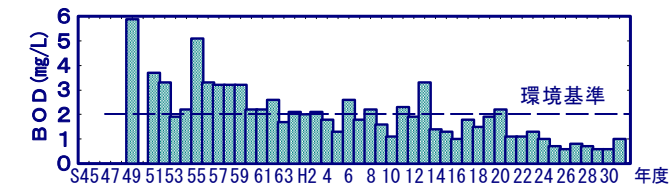
白山川 (◎第五号橋)



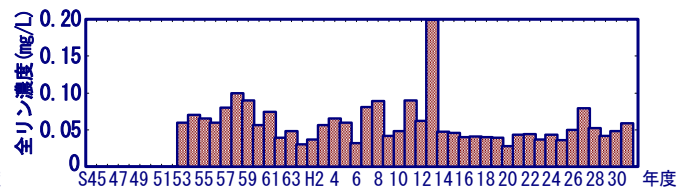
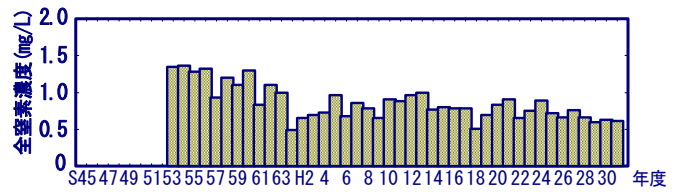
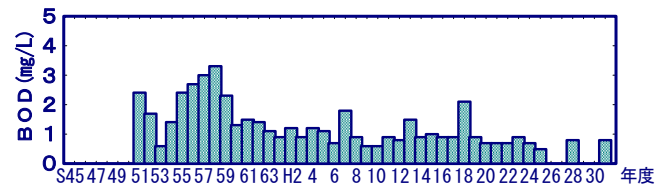
新城川上流 (新城橋)



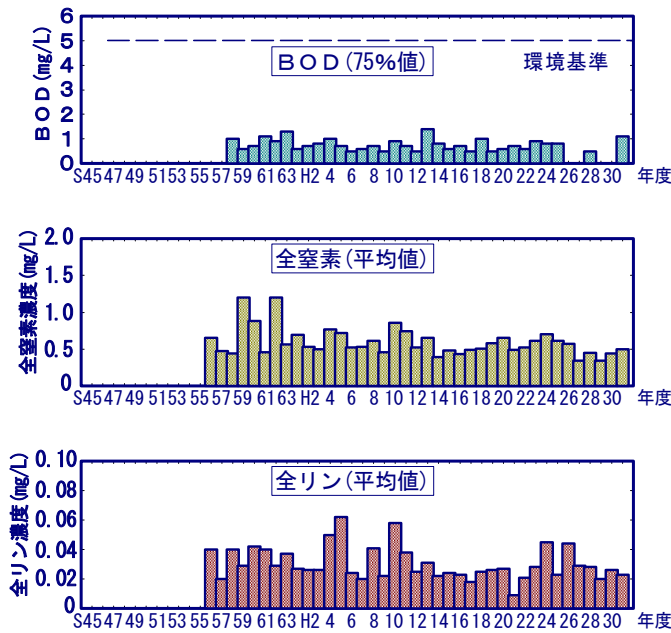
新城川下流 (新城川橋)



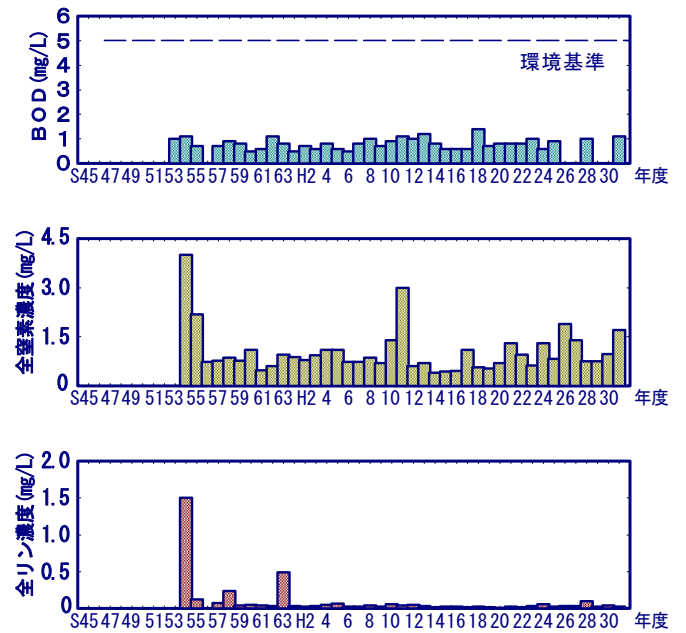
新城川下流 (◎大浜橋)



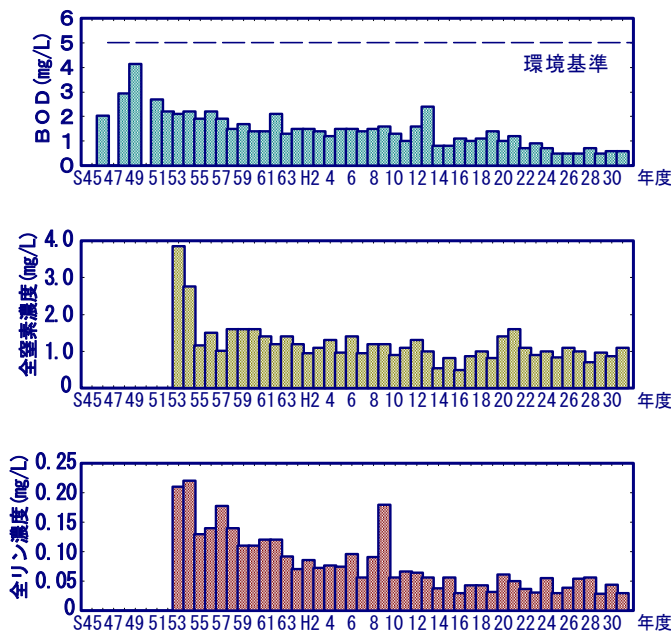
旧雄物川（茨島橋・茨島水門）



旧雄物川（旭川合流前）



旧雄物川（港大橋）



雄物川下流（雄物新橋）

